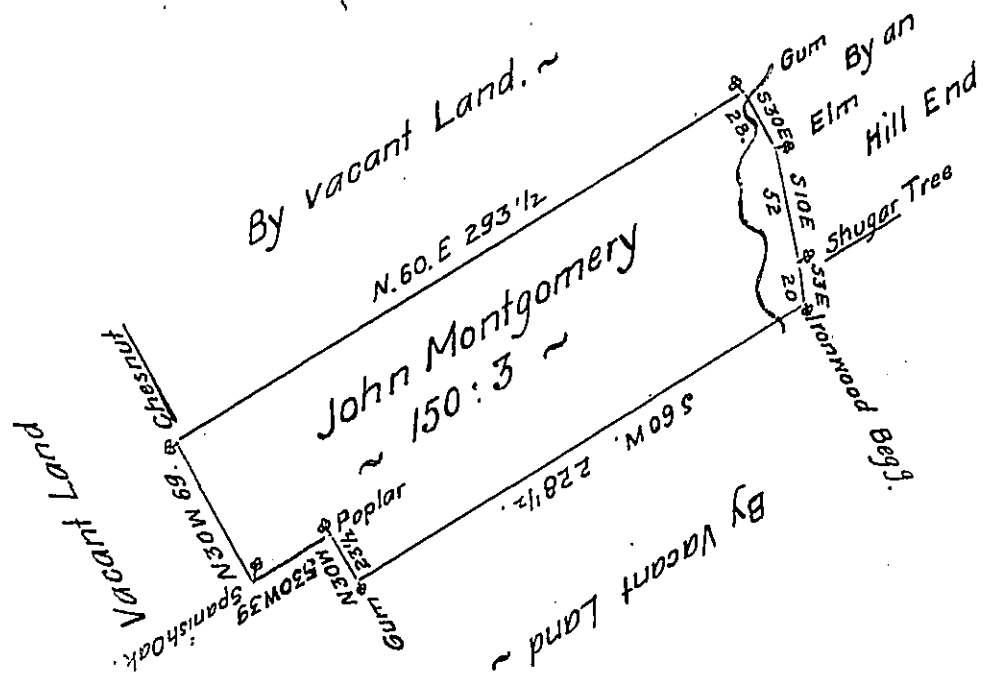


FORM NO 1.



The Draught of a Tract of Land called _____ situate on the Water of Jacks Creek
 in the County of Cumberland containing One Hundred Fifty ^{Acres} 63 Perches with the usual
 allowance of Six Acres $\frac{1}{4}$ Cent for Roads. Survey'd the 30th day of August Anno Dom.
 1768 In Pursuance of an Order of Survey to John Montgomery Bearing Date at Philad^a
 the 17th day of November Anno Dom: 1766 and numbered 1905.

To John Lukens Esq: S.G. } $\frac{1}{4}$ Wm Maclay D.S.
 of Pennsylvania. ~ }

IN TESTIMONY that the above is a copy of the original remaining on file in
 the Department of Internal Affairs of Pennsylvania, made
 conformably to an Act of Assembly approved the 16th day of
 February, 1833, I have hereunto set my Hand and caused
 the Seal of said Department to be affixed at Harrisburg,
 this thirteenth day of August 1908

Henry Howard
 Secretary of Internal Affairs.